

Walk-through boot cleaning machine type 23830



Walk-through boot cleaning machine type 23830



Walk-through boot cleaning machine type 23830-1000 with Inlet Complete

Cleaning and disinfection of soles and boot legs

The Walk-through boot cleaning machines of the type 23830 series can be integrated directly into the process chain of operational personnel hygiene in front of the production entrances. The interaction of the sole brushes and the 3 vertically arranged shaft cleaning brushes allows a fast cleaning of the boots in a continuous process. The two versions with up-stream sole brushes (lengths 500/1,000 mm) can be turned into a complete hygiene station by integrating hand hygiene (Inlet Control 23740 or Inlet Complete 23761/23771). The 23830-1000 version can be used by boot wearers and clog wearers via a bypass.

Version

- 1-2 helically bristled sole brushes (number depends on variant) and 3 vertically arranged shaft cleaning brushes
- 2-phase cleaning, water/chemicals separate
- Rinsing with clear water after addition of detergent
- Safe standing due to non-slip surfaces, step guide, railing and steps
- Easy cleaning through removable brushes (without tools)
- Material: Stainless steel 1.4301

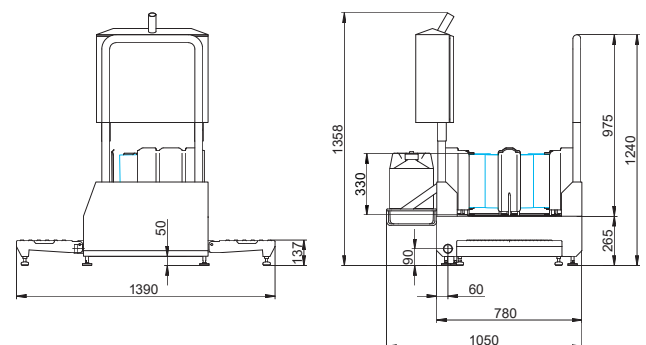
Options

- Lateral machine access, for those with low shoes
- Integration of hand cleaning and disinfection systems
- Available in three sizes

Technical data

Type	23830
Power supply	400 V, 3/N/PE
Main frequency	50 - 60 Hz
Power consumption	1.0 - 1.25 Kw
Control voltage	24V DC
Protection class	IP65
Water supply	R 1/2" i (T max = 43°C)
Drain	R 1 1/2" a / HT-DN50

Technical data may be subject to changes



Contact

CN: shanghai@frontmatec.com
Phone: +86 215 859 4850

DK: kolding@frontmatec.com
Phone: +45 763 427 00

NL: rijssen@frontmatec.com
Phone: +31 886 294 000

UK: birmingham@frontmatec.com
Phone: +44 121 313 3564

itec-hygiene.com
frontmatec.com

DE: hygiene@frontmatec.com
Phone: +49 252 185 070

ES: barcelona@frontmatec.com
Phone: +34 932 643 800

RU: moscow@frontmatec.com
Phone: +7 495 424 9559

US: kansascity@frontmatec.com
Phone: +1 816 891 2440